
1996

STATISTICS

Introduction

On the following pages are tables showing data on the number of persons taking and passing bar examinations in 1996; the number taking bar examinations from different sources of legal education (ABA-approved law schools, etc.); the number of first-time-takers and repeaters; the number of persons admitted by examination, on motion, and by diploma; the number licensed as foreign legal consultants; and the number of disbarred attorneys taking some form of examination.

Data for the tables appearing on pages 16 through 24 were provided by the reporting jurisdictions. All percent passing figures used in these statistics are rounded to the nearest whole percent. In reviewing data on the number of applicants taking examinations, the reader should keep in mind that a person may seek admission in more than one jurisdiction in a given year. Some states have been unable to supply the actual number of those admitted to the bar in 1996 and instead have provided the number of those passing the bar or those recommended for admission.

Data for the Multistate Bar Examination (MBE) and the Multistate Professional Responsibility Examination (MPRE) statistics were provided by ACT.

Persons Taking and Passing the 1996 Bar Examination

Jurisdiction	Number Taking February	Number Passing February	Percent Passing February	Number Taking July	Number Passing July	Percent Passing July	Total Taking	Total Passing	Total Percent Passing
Alabama	361	195	54	577	378	66	938	573	61
Alaska	51	35	69	66	47	71	117	82	70
Arizona	365	259	71	609	479	79	974	738	76
Arkansas	120	93	78	224	177	79	344	270	78
California	3,858	1,686	44	7,485	4,184	56	11,343	5,870	52
Attorney Exam	171	103	60	146	68	47	317	171	54
Colorado	312	208	67	667	536	80	979	744	76
Connecticut	428	331	77	919	739	80	1,347	1,070	79
Delaware	<i>No February examination</i>			208	105	50	208	105	50
District of Columbia	172	90	52	216	102	47	388	192	49
Florida	1,079	774	72	2,085	1,659	80	3,164	2,433	77
Georgia	1,238	1,021	82	679	498	73	1,917	1,519	79
Attorney Exam	159	132	83	109	92	84	268	224	84
Guam	15	11	73	12	6	50	27	17	63
Hawaii	110	69	63	172	125	73	282	194	69
Idaho	93	59	63	134	102	76	227	161	71
Illinois	944	741	78	2,280	1,898	83	3,224	2,639	82
Indiana	221	156	71	534	405	76	755	561	74
Iowa	81	61	75	233	175	75	314	236	75
<i>Bar examinations were given in January and June.</i>									
Kansas	263	217	83	324	253	78	587	470	80
Kentucky	154	109	71	364	298	82	518	407	79
Louisiana	404	267	66	719	475	66	1,123	742	66
Maine	114	75	66	181	137	76	295	212	72
Attorney Exam	13	11	85	11	7	64	24	18	75
Maryland	800	540	68	1,587	1,106	70	2,387	1,646	69
Attorney Exam	118	109	92	103	90	87	221	199	90
Massachusetts	897	554	62	2,383	1,843	77	3,280	2,397	73
Attorney Exam	97	97	100	93	83	89	190	180	95
Michigan	673	478	71	949	703	74	1,622	1,181	73
Minnesota	217	158	73	731	653	89	948	811	86
Mississippi	89	60	67	214	192	90	303	252	83
Attorney Exam	4	4	100	—	—	—	4	4	100
Missouri	302	239	79	704	566	80	1,006	805	80
Montana	<i>No February examination</i>			116	109	94	116	109	94
Nebraska	41	30	73	190	179	94	231	209	90
Nevada	<i>No February examination</i>			536	336	63	536	336	63
New Hampshire	155	103	66	179	128	72	334	231	69
New Jersey	1,206	701	58	3,735	2,768	74	4,941	3,469	70
New Mexico	116	99	85	208	177	85	324	276	85
New York	2,659	1,433	54	8,070	5,743	71	10,729	7,176	67
North Carolina	310	180	58	821	621	76	1,131	801	71

Persons Taking and Passing the 1996 Bar Examination

<i>Jurisdiction</i>	<i>Number Taking February</i>	<i>Number Passing February</i>	<i>Percent Passing February</i>	<i>Number Taking July</i>	<i>Number Passing July</i>	<i>Percent Passing July</i>	<i>Total Taking</i>	<i>Total Passing</i>	<i>Total Percent Passing</i>
North Dakota	<i>No February examination</i>			59	51	86	59	51	86
Northern Mariana Islands	12	7	58	15	2	13	27	9	33
Ohio	389	313	80	1,368	1,196	87	1,757	1,509	86
Oklahoma	180	134	74	356	285	80	536	419	78
Oregon	263	190	72	521	393	75	784	583	74
Pennsylvania	809	472	58	2,065	1,475	71	2,874	1,947	68
Puerto Rico	292	147	50	468	281	60	760	428	56
<i>Bar examinations were given in March and September.</i>									
Rhode Island	69	48	70	162	102	63	231	150	65
<i>Attorney Exam</i>	29	27	93	25	24	96	54	51	94
South Carolina	121	101	83	379	335	88	500	436	87
South Dakota	35	27	77	85	72	85	120	99	82
Tennessee	221	137	62	597	449	75	818	586	72
Texas	1,078	711	66	2,336	1,833	78	3,414	2,544	75
<i>Attorney Exam</i> ¹	25	15	60	27	16	59	52	31	60
Utah	94	76	81	228	201	88	322	277	86
<i>Attorney Exam</i>	24	22	92	28	27	96	52	49	94
Vermont	50	32	64	82	61	74	132	93	70
Virgin Islands	18	10	56	18	14	78	36	24	67
Virginia	497	358	72	1,081	818	76	1,578	1,176	75
Washington	444	322	73	864	653	76	1,308	975	75
West Virginia	88	63	72	206	158	77	294	221	75
Wisconsin	96	81	84	212	193	91	308	274	89
Wyoming	30	19	63	65	42	65	95	61	64
TOTAL	23,274	14,800	64	50,820	36,923	73	74,094	51,723	70

1. Texas administers its Attorney Exam four times per year. The annual total of 52 taking and 31 passing has been divided between the February and July exams by NCBE.

Total Taking and Passing by Source of Legal Education in 1996

Jurisdiction	ABA-Approved Law School			Non-ABA-Approved Law School			Law School Outside the USA			Law Office Study		
	Taking	Passing	Percent Passing	Taking	Passing	Percent Passing	Taking	Passing	Percent Passing	Taking	Passing	Percent Passing
Alabama	506	416	82	432	157	36	—	—	—	—	—	—
Alaska	117	82	70	—	—	—	—	—	—	—	—	—
Arizona	964	731	76	8	7	88	2	0	0	—	—	—
Arkansas	344	270	78	—	—	—	—	—	—	—	—	—
California ¹	6,710	4,417	66	3,131	858	27	—	—	—	13	3	23
Colorado	956	737	77	5	3	60	18	4	22	—	—	—
Connecticut	1,347	1,070	79	—	—	—	—	—	—	—	—	—
Delaware	208	105	50	—	—	—	—	—	—	—	—	—
District of Columbia	363	188	52	25	4	16	—	—	—	—	—	—
Florida	3,160	2,432	77	4	1	25	—	—	—	—	—	—
Georgia	1,583	1,408	89	334	111	33	—	—	—	—	—	—
Guam	27	17	63	—	—	—	—	—	—	—	—	—
Hawaii	279	194	70	3	0	0	—	—	—	—	—	—
Idaho	227	161	71	—	—	—	—	—	—	—	—	—
Illinois	3,224	2,639	82	—	—	—	—	—	—	—	—	—
Indiana	755	561	74	—	—	—	—	—	—	—	—	—
Iowa	314	236	75	—	—	—	—	—	—	—	—	—
Kansas	587	470	80	—	—	—	—	—	—	—	—	—
Kentucky	518	407	79	—	—	—	—	—	—	—	—	—
Louisiana	1,096	733	67	—	—	—	27	9	33	—	—	—
Maine	294	212	72	—	—	—	1	0	0	—	—	—
Maryland	2,377	1,639	69	7	4	57	3	3	100	—	—	—
Massachusetts	2,728	2,109	77	552	288	52	—	—	—	—	—	—
Michigan	1,622	1,181	73	—	—	—	—	—	—	—	—	—
Minnesota	948	811	86	—	—	—	—	—	—	—	—	—
Mississippi	303	252	83	—	—	—	—	—	—	—	—	—
Missouri	1,006	805	80	—	—	—	—	—	—	—	—	—
Montana	116	109	94	—	—	—	—	—	—	—	—	—
Nebraska	231	209	90	—	—	—	—	—	—	—	—	—
Nevada	535	336	63	—	—	—	1	0	0	—	—	—
New Hampshire	263	195	74	68	36	53	3	0	0	—	—	—
New Jersey	4,941	3,469	70	—	—	—	—	—	—	—	—	—
New Mexico	322	274	85	2	2	100	—	—	—	—	—	—
New York	9,208	6,697	73	3	1	33	1,480	467	32	38	11	29
North Carolina	1,117	800	72	14	1	7	—	—	—	—	—	—
North Dakota	59	51	86	—	—	—	—	—	—	—	—	—
Northern Mariana Islands	27	9	33	—	—	—	—	—	—	—	—	—
Ohio	1,749	1,506	86	—	—	—	8	3	38	—	—	—
Oklahoma	536	419	78	—	—	—	—	—	—	—	—	—
Oregon	774	581	75	8	2	25	2	0	0	—	—	—
Pennsylvania	2,868	1,945	68	—	—	—	6	2	33	—	—	—
Puerto Rico	755	427	57	—	—	—	5	1	20	—	—	—
Rhode Island	231	150	65	—	—	—	—	—	—	—	—	—

1. Totals from California exclude 1,489 applicants (representing foreign-trained applicants and applicants not allocated to a particular law school because the bar exam was not taken within one year of graduation).

Total Taking and Passing by Source of Legal Education in 1996

Jurisdiction	ABA-Approved Law School			Non-ABA-Approved Law School			Law School Outside the USA			Law Office Study		
	Taking	Passing	Percent Passing	Taking	Passing	Percent Passing	Taking	Passing	Percent Passing	Taking	Passing	Percent Passing
South Carolina	500	436	87	—	—	—	—	—	—	—	—	—
South Dakota	120	99	82	—	—	—	—	—	—	—	—	—
Tennessee	756	560	74	47	20	43	15	6	40	—	—	—
Texas	3,401	2,540	75	8	0	0	5	4	80	—	—	—
Utah	322	277	86	—	—	—	—	—	—	—	—	—
Vermont	115	86	75	—	—	—	—	—	—	17	7	41
Virgin Islands	36	24	67	—	—	—	—	—	—	—	—	—
Virginia	1,529	1,158	76	—	—	—	13	5	38	36	13	36
Washington	1,308	975	75	—	—	—	—	—	—	—	—	—
West Virginia	290	218	75	4	3	75	—	—	—	—	—	—
Wisconsin	308	274	89	—	—	—	—	—	—	—	—	—
Wyoming	95	61	64	—	—	—	—	—	—	—	—	—
TOTAL	65,075	48,168	74	4,655	1,498	32	1,589	504	32	104	34	33

Examinations Administered to Disbarred or Suspended Attorneys as a Condition for Reinstatement in 1996

<u>JURISDICTION</u>	<u>TAKING</u>	<u>PASSING</u>	<u>% PASSING</u>
Arizona	3	1	33
Arkansas	1	0	0
Colorado	1	0	0
Kentucky	1	1	100
Michigan	1	0	0
Minnesota	1	1	100
Mississippi	3	1	33
New Hampshire	1	1	100
South Carolina	1	0	0
Texas	4	1	25
TOTAL	17	6	35

First-Timers and Repeaters in 1996

<i>Jurisdiction</i>	<i>1996 Administration</i>	<i>Total Taking</i>	<i>First-Timers Taking</i>	<i>First-Timers Passing</i>	<i>First-Timers Percent Passing</i>	<i>Repeaters Taking</i>	<i>Repeaters Passing</i>	<i>Repeaters Percent Passing</i>
Alabama	February	361	227	160	70	134	35	26
	July	577	452	352	78	125	26	21
Alaska	February	51	36	29	81	15	6	40
	July	66	52	43	83	14	4	29
Arizona	February	365	272	205	75	93	54	58
	July	609	522	433	83	87	46	53
Arkansas	February	120	81	70	86	39	23	59
	July	224	203	171	84	21	6	29
California	February	3,858	1,440	857	60	2,418	829	34
	July	7,485	5,644	3,884	69	1,841	300	16
Colorado	February	312	204	167	82	108	41	38
	July	667	584	517	89	83	19	23
Connecticut	February	428	308	268	87	120	63	52
	July	919	838	707	84	81	32	40
Delaware	<i>No February examination</i>							
	July	<i>Not Available</i>	<i>Not Available</i>	<i>Not Available</i>	<i>Not Available</i>	<i>Not Available</i>	<i>Not Available</i>	<i>Not Available</i>
District of Columbia	February	172	19	10	53	153	80	52
	July	216	58	45	78	158	57	36
Florida	February	1,079	816	670	82	263	104	40
	July	2,085	1,903	1,593	84	182	66	36
Georgia	February	1,238	1,055	932	88	183	89	49
	July	679	478	421	88	201	77	38
Guam	February	15	14	11	79	1	0	0
	July	12	7	4	57	5	2	40
Hawaii	February	110	79	50	63	31	19	61
	July	172	161	123	76	11	2	18
Idaho	February	93	62	48	77	31	11	35
	July	134	113	91	81	21	11	52
Illinois	February	944	711	610	86	233	131	56
	July	2,280	2,130	1,836	86	150	62	41
Indiana	February	221	154	114	74	67	42	63
	July	534	490	383	78	44	22	50
Iowa	January	81	58	50	86	23	11	48
	June	233	218	170	78	15	5	33
Kansas	February	263	230	200	87	33	17	52
	July	324	288	240	83	36	13	36
Kentucky	February	154	100	80	80	54	29	54
	July	364	318	266	84	46	32	70
Louisiana	February	404	117	60	51	287	207	72
	July	719	586	402	69	133	73	55
Maine	February	114	69	53	77	45	22	49
	July	181	157	127	81	24	10	42
Maryland	February	800	422	326	77	378	214	57
	July	1,587	1,370	1,035	76	217	71	33

First-Timers and Repeaters in 1996

<i>Jurisdiction</i>	<i>1996 Administration</i>	<i>Total Taking</i>	<i>First-Timers Taking</i>	<i>First-Timers Passing</i>	<i>First-Timers Percent Passing</i>	<i>Repeaters Taking</i>	<i>Repeaters Passing</i>	<i>Repeaters Percent Passing</i>
Massachusetts	February	897	478	357	75	419	197	47
	July	2,383	2,126	1,756	83	257	87	34
Michigan	February	673	338	275	81	335	203	61
	July	949	791	664	84	158	39	25
Minnesota	February	217	149	124	83	68	34	50
	July	731	679	624	92	52	29	56
Mississippi	February	89	57	46	81	32	14	44
	July	214	192	180	94	22	12	55
Missouri	February	302	245	210	86	57	29	51
	July	704	635	525	83	69	41	59
Montana	<i>No February examination</i>							
	July	116	108	102	94	8	7	88
Nebraska	February	41	30	23	77	11	7	64
	July	190	179	173	97	11	6	55
Nevada	<i>No February examination</i>							
	July	536	413	285	69	123	51	41
New Hampshire	February	155	125	86	69	30	17	57
	July	179	155	119	77	24	9	38
New Jersey	February	1,206	662	462	70	544	239	44
	July	3,735	3,402	2,658	78	333	110	33
New Mexico	February	116	94	89	95	22	10	45
	July	208	194	173	89	14	4	29
New York	February	2,659	1,080	750	69	1,579	683	43
	July	8,070	6,942	5,418	78	1,128	325	29
North Carolina	February	310	212	142	67	98	38	39
	July	821	732	589	80	89	32	36
North Dakota	<i>No February examination</i>							
	July	59	52	47	90	7	4	57
Northern Mariana Islands	February	12	11	6	55	1	1	100
	July	15	13	2	15	2	0	0
Ohio	February	389	272	249	92	117	64	55
	July	1,368	1,311	1,178	90	57	18	32
Oklahoma	February	180	105	91	87	75	43	57
	July	356	317	267	84	39	18	46
Oregon	February	263	195	154	79	68	36	53
	July	521	467	361	77	54	32	59
Pennsylvania	March	809	359	253	70	450	219	49
	September	2,065	1,834	1,384	75	231	91	39
Puerto Rico	February	292	92	50	54	200	97	48
	July	468	354	251	71	114	30	26
Rhode Island	February	69	48	38	79	21	10	48
	July	162	150	101	67	12	1	8
South Carolina	February	121	103	91	88	18	10	56
	July	379	365	328	90	14	7	50

First-Timers and Repeaters in 1996

<i>Jurisdiction</i>	<i>1996 Administration</i>	<i>Total Taking</i>	<i>First-Timers Taking</i>	<i>First-Timers Passing</i>	<i>First-Timers Percent Passing</i>	<i>Repeaters Taking</i>	<i>Repeaters Passing</i>	<i>Repeaters Percent Passing</i>
South Dakota	February	35	29	24	83	6	3	50
	July	85	79	68	86	6	4	67
Tennessee	February	221	122	90	74	99	47	47
	July	597	523	423	81	74	26	35
Texas	February	1,078	641	490	76	437	221	51
	July	2,336	1,990	1,677	84	346	156	45
Utah	February	94	74	68	92	20	8	40
	July	228	213	196	92	15	5	33
Vermont	February	50	28	20	71	22	12	55
	July	82	65	57	88	17	4	24
Virgin Islands	February	18	15	10	67	3	0	0
	July	18	16	12	75	2	2	100
Virginia	February	497	267	203	76	230	155	67
	July	1,081	963	767	80	118	51	43
Washington	February	444	338	248	73	106	74	70
	July	864	775	569	73	89	84	94
West Virginia	February	88	17	10	59	71	53	75
	July	206	158	126	80	48	32	67
Wisconsin	February	96	76	65	86	20	16	80
	July	212	200	185	92	12	8	67
Wyoming	February	30	11	4	36	19	15	79
	July	65	50	38	76	15	4	27
TOTAL		72,704	55,762	43,844	79	16,942	6,847	40

Admission to Bar by States - 1992, 1993, 1994, 1995, and 1996

State	Admission by Examination					Admission on Motion				
	1992	1993	1994	1995	1996	1992	1993	1994	1995	1996
Alabama	454	492	542	536	573	—	—	—	—	—
Alaska	116	113	128	82	82	12	17	16	8	10
Arizona	603	Not Available	731	735	688	—	—	—	—	—
Arkansas	273	248	249	286	270	—	—	—	—	—
California	6,234	5,804	6,048	5,690	5,820	—	—	—	—	—
Attorney Exam ¹	210	142	171	Not Available	Not Available	—	—	—	—	—
Colorado	Not Available	Not Available	797	695	744	Not Available	Not Available	642	670	515
Connecticut	1,505	760	1,233	1,152	975	111	114	107	92	180
Delaware	106	Not Available	103	107	110	—	—	—	—	—
District of Columbia	155	135	122	148	173	2,929	2,935	2,383	2,645	3,128
Florida	2,680	2,583	2,681	2,767	2,579	—	—	—	—	—
Georgia	1,083	1,362	1,396	1,287	1,469	—	—	—	—	—
Guam	15	16	40	20	17	15	6	—	—	—
Hawaii	276	219	238	317	194	—	—	—	—	—
Idaho	205	174	204	173	164	—	—	—	—	—
Illinois	2,942	2,822	2,930	2,670	2,648	77	64	61	83	90
Indiana	550	671	611	599	563	56	45	53	52	50
Iowa	312	230	266	276	236	42	30	27	31	40
Kansas	484	450	461	456	470	4	3	—	6	3
Kentucky	348	386	467	469	407	15	30	30	31	33
Louisiana	751	731	683	570	742	—	—	—	—	—
Maine	122	100	116	96	194	—	—	—	—	—
Attorney Exam	96	98	89	89	18	—	—	—	—	—
Maryland	1,253	1,444	1,383	1,537	1,637	—	—	—	—	—
Attorney Exam	179	149	207	176	162	—	—	—	—	—
Massachusetts	2,378	1,890	2,206	2,343	2,483	—	—	—	—	—
Attorney Exam	137	127	144	165	162	—	—	—	—	—
Michigan	1,099	1,083	961	1,029	1,181	86	112	108	100	115
Minnesota	829	738	860	793	800	155	152	154	179	183
Mississippi	309	222	209	274	252	—	—	—	—	—
Attorney Exam	3	10	5	6	4	—	—	—	—	—
Missouri	850	915	1,026	947	805	91	87	100	85	172
Montana	105	97	162*	115	109	12	Not Available	Not Available	—	—
Attorney Exam	1	1	—	1	—	—	—	—	—	—
Nebraska	203	224	242	212	209	77	76	71	70	83
Nevada	306	273	362	271	336	—	—	—	—	—
New Hampshire	233	221	219	213	222	—	—	—	—	—
New Jersey	3,450	3,392	3,831	2,981	3,153	5	2	2	—	—
New Mexico	307	295	289	285	260	—	—	—	—	—
New York	6,320*	6,162	6,233	6,611*	6,732	196	263	180	194	208
North Carolina	670	694	814	800	802	55	82	87	92	104
North Dakota	74	58	69	60	53	21	20	20	19	19
Northern Mariana Islands	6	11	8	9	9	19	20	19	20	—
Attorney Exam	3	2	—	1	—	—	—	—	—	—
Ohio	1,424	1,536	1,552	1,441	1,509	144	88	48	70	91
Oklahoma	467	439	461	389	416	16	31	14	19	38

*Total includes some motion applicants.

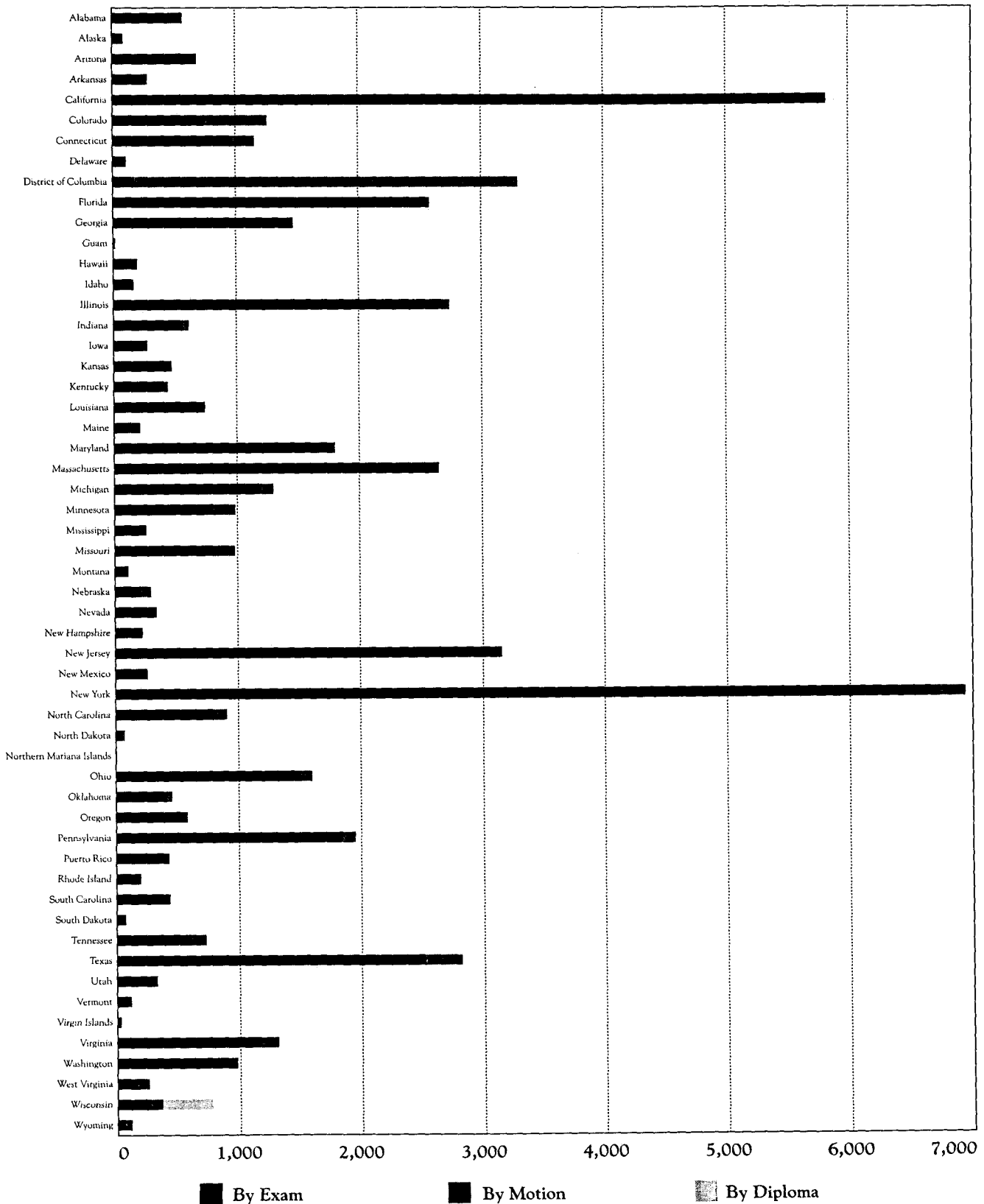
1. 1995 and 1996 totals include those who were admitted by passing the Attorney Exam.

Admission to Bar by States - 1992, 1993, 1994, 1995, and 1996

State	Admission by Examination					Admission on Motion				
	1992	1993	1994	1995	1996	1992	1993	1994	1995	1996
Oregon	636	559	569	553	581	—	—	—	—	—
Pennsylvania	2,793	Not Available	3,434	2,310	1,846	600	Not Available	45	132	105
Puerto Rico	283	415	298	408	428	—	—	—	—	—
Rhode Island	170	188	144	131	145	24	—	—	—	—
Attorney Exam	Not Available	32	34	47	51	—	—	—	—	—
South Carolina	397	416	411	420	423	—	6	9	10	13
South Dakota	98	94	114	121	72	—	—	—	—	—
Tennessee	523	609	521	765	604	84	62	85	100	123
Texas	2,718	2,789	2,806	3,038	2,487	369	360	240	181	296
Attorney Exam	36	40	21	29	30	—	—	—	—	—
Utah	255	291	278	271	277	—	—	—	—	—
Attorney Exam	32	38	55	56	49	—	—	—	—	—
Vermont	119	84	103	102	83	30	32	24	28	32
Virgin Islands	Not Available	Not Available	26	33	30	—	—	—	—	—
Virginia	1,155	1,258	1,035	1,144	1,170	168	—	Not Available	136	145
Washington	1,269	1,085	1,056	1,055	975	—	—	—	—	—
West Virginia	207	193	215	227	220	26	44	37	36	38
Wisconsin	267	264	248	218	267	95	72	63	78	96
Wyoming	55	60	45	100	62	36	35	24	50	54
TOTAL	51,139	45,934	52,962	50,907	50,232	5,570	4,788	4,649	5,217	5,964

State	Licensed as Foreign Legal Consultants					Admission by Diploma				
	1992	1993	1994	1995	1996	1992	1993	1994	1995	1996
Alaska	—	1	—	—	—	—	—	—	—	—
California	—	—	4	10	—	—	—	—	—	—
District of Columbia	2	5	3	4	1	—	—	—	—	—
Florida	—	6	—	12	1	—	—	—	—	—
Georgia	—	—	—	1	1	—	—	—	—	—
Hawaii	1	1	—	1	1	—	—	—	—	—
Illinois	—	—	1	—	—	—	—	—	—	—
Indiana	—	—	1	1	—	—	—	—	—	—
Michigan	—	1	1	—	—	—	—	—	—	—
Minnesota	—	—	1	—	—	—	—	—	—	—
New Jersey	—	—	—	3	—	—	—	—	—	—
New Mexico	—	—	—	1	—	—	—	—	—	—
New York	—	13	10	11	16	—	—	—	—	—
Ohio	—	2	—	—	1	—	—	—	—	—
Oregon	—	—	—	1	—	—	—	—	—	—
Texas	1	1	2	3	2	—	—	—	—	—
Washington	—	2	—	—	—	—	—	—	—	—
Wisconsin	—	—	—	—	—	413	426	457	441	410
TOTAL	4	32	23	48	23	413	426	457	441	410

ADMISSION BY EXAMINATION, MOTION, AND DIPLOMA - 1996

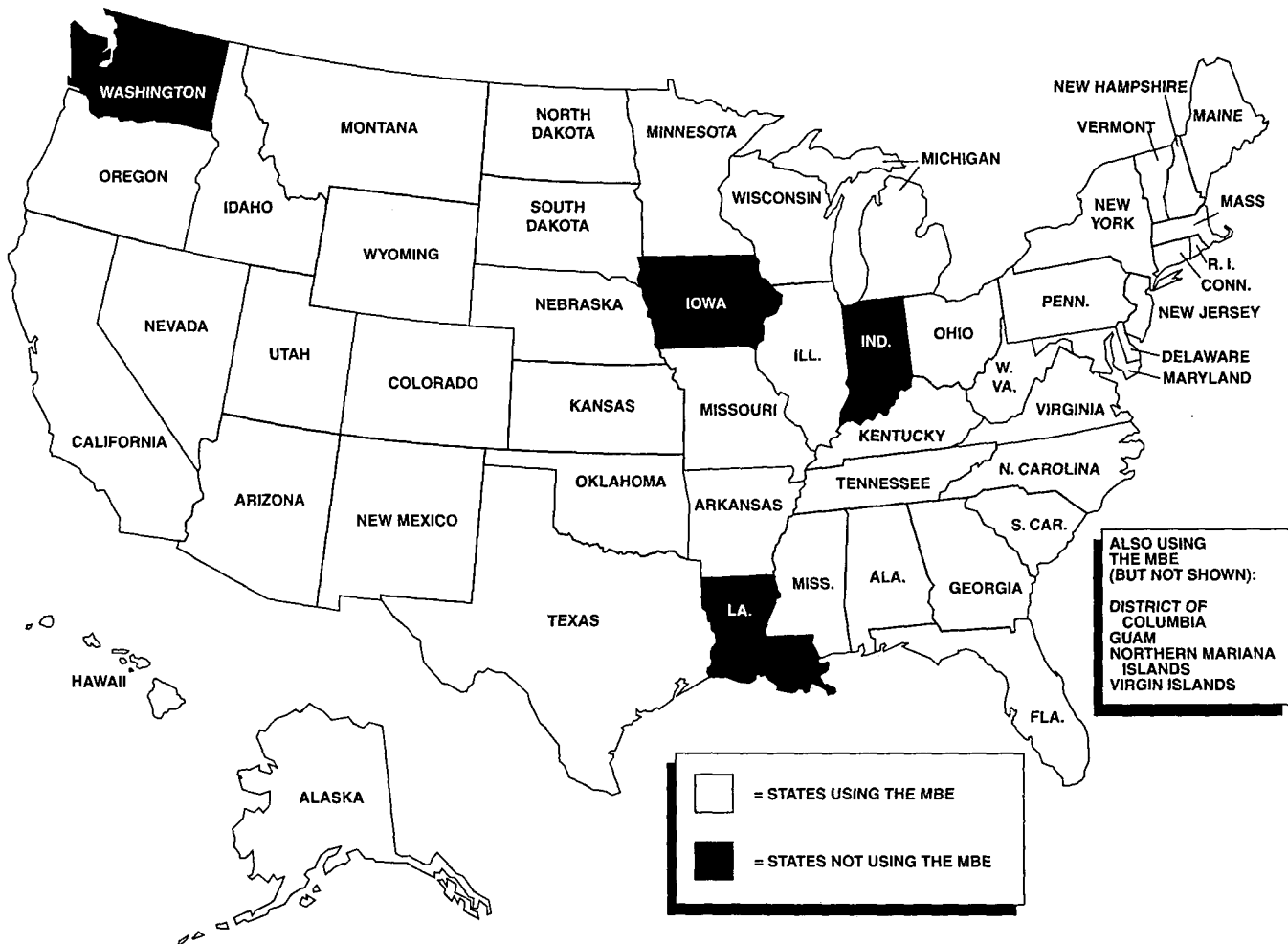


MULTISTATE BAR EXAMINATION STATISTICS

The National Conference of Bar Examiners has administered the Multistate Bar Examination (MBE) since 1972. In 1996, the MBE was used in 50 jurisdictions. Iowa adopted the MBE effective with the February 1997 test.

The MBE is a 200-item multiple-choice examination covering Constitutional Law, Contracts, Criminal Law, Evidence, Real Property, and Torts. Both raw and scaled scores are computed for each applicant. Raw scores on different forms of the test are not comparable due to differences in the difficulty of test forms. Scaled scores are produced by a statistical procedure called equating that involves repeating items from previous examinations. A comparison of the performance of the current applicant population on the repeated items to performance of the prior applicant group allows conclusions to be drawn about the relative difficulty of the new items on the exam, and test scores are adjusted accordingly. Scaled scores are comparable across administrations of the examination.

Jurisdictions Using the Multistate Bar Examination in 1996



MBE Summary Statistics

February 1996—19,054 Applicants

	Constitutional		Criminal		Real		Total Raw	Total Scaled
	Law	Contracts	Law	Evidence	Property	Torts		
Mean	21.754	24.453	18.810	16.503	16.777	24.203	122.500	138.812
Standard Deviation	3.526	4.367	3.425	3.699	3.726	4.107	17.386	15.416
Maximum	30.0	38.0	29.0	30.0	29.0	38.0	180.0	190.0
Minimum	4.0	7.0	4.0	4.0	4.0	8.0	44.0	69.0
Median	22.0	25.0	19.0	17.0	17.0	24.0	123.0	139.0

July 1996—42,811 Applicants

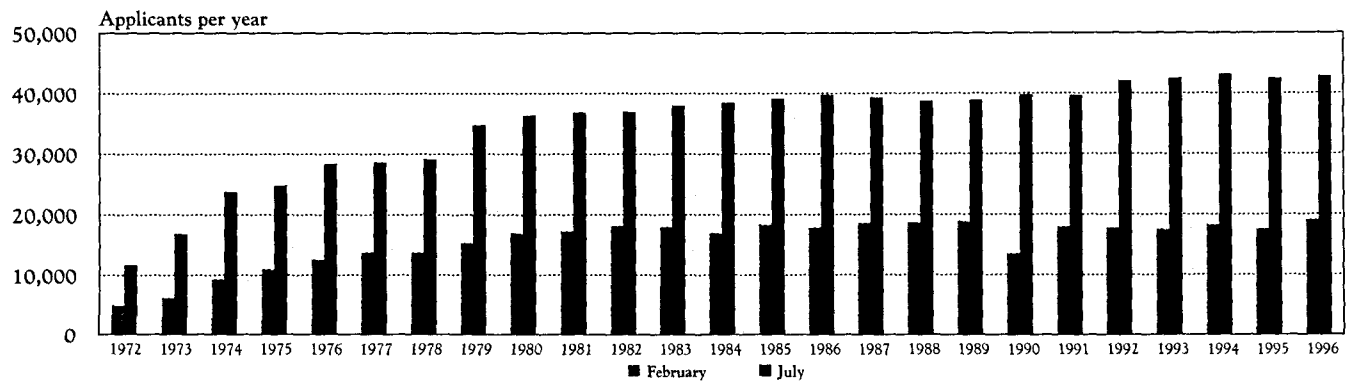
	Constitutional		Criminal		Real		Total Raw	Total Scaled
	Law	Contracts	Law	Evidence	Property	Torts		
Mean	23.583	25.513	19.633	17.048	18.687	25.096	129.560	143.237
Standard Deviation	3.201	4.451	3.081	3.570	3.859	4.093	17.295	15.476
Maximum	30.0	39.0	29.0	29.0	30.0	38.0	181.0	189.0
Minimum	4.0	4.0	5.0	3.0	3.0	8.0	50.0	72.0
Median	24.0	26.0	20.0	17.0	19.0	25.0	131.0	145.0

Number of Applicants Taking the MBE

	February Applicants	July Applicants	Total Number Applicants		February Applicants	July Applicants	Total Number Applicants
1972	4,955	11,672	16,627	1986	17,825	39,774	57,599
1973	6,182	16,826	23,008	1987	18,606	39,335	57,941
1974	9,316	23,728	33,044	1988	18,610	38,765	57,375*
1975	10,963	24,835	35,798	1989	18,821	38,900	57,721
1976	12,610	28,381	40,991	1990	13,545**	39,750	53,295
1977	13,738	28,608	42,346	1991	17,954	39,621	57,575
1978	13,715	29,171	42,886	1992	17,755	42,064	59,819
1979	15,341	34,818	50,159	1993	17,497	42,505	60,002
1980	16,948	36,368	53,316	1994	18,267	43,127	61,394
1981	17,289	36,846	54,135	1995	17,605	42,498	60,103
1982	18,150	36,995	55,145	1996	19,054	42,811	61,865
1983	17,964	38,034	55,998				
1984	16,938	38,511	55,449				
1985	18,303	39,149	57,452				

*519 NY applicants not included

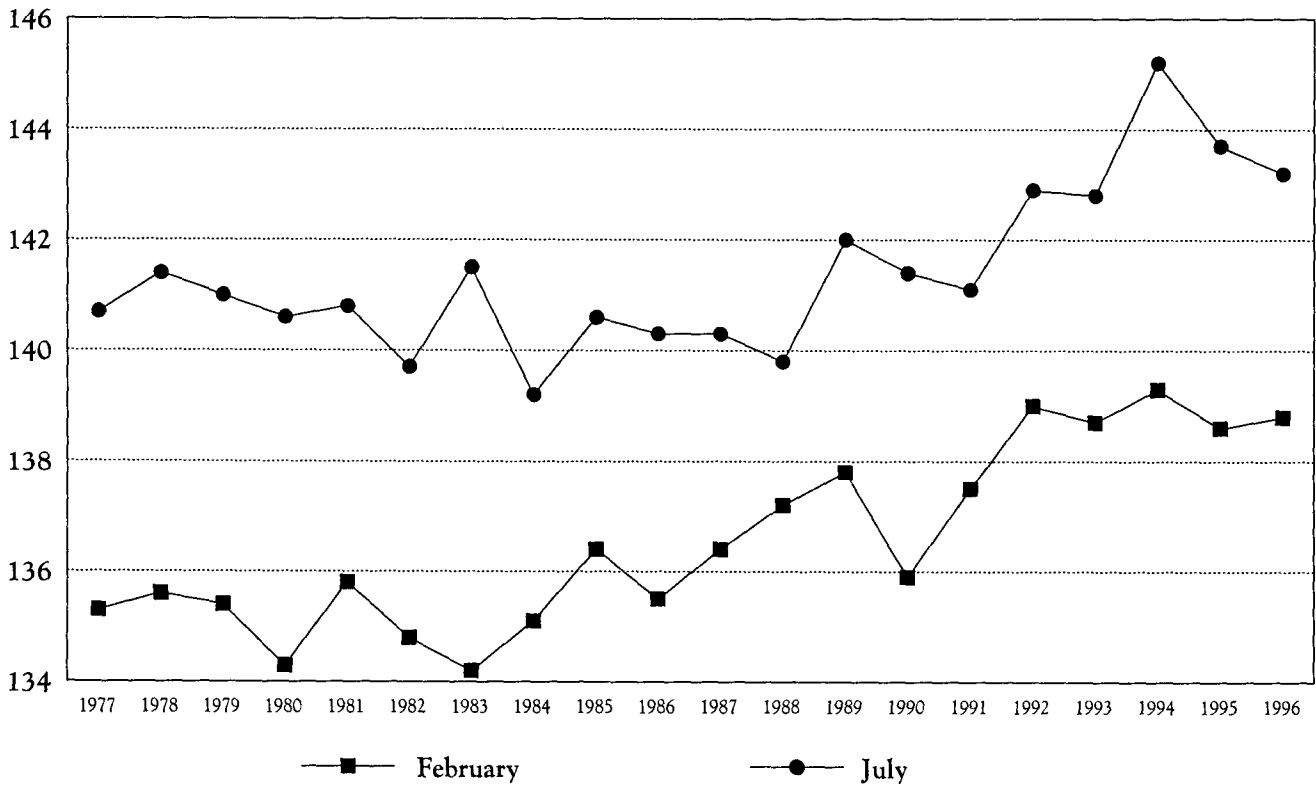
**Excluding 3,837 CA applicants



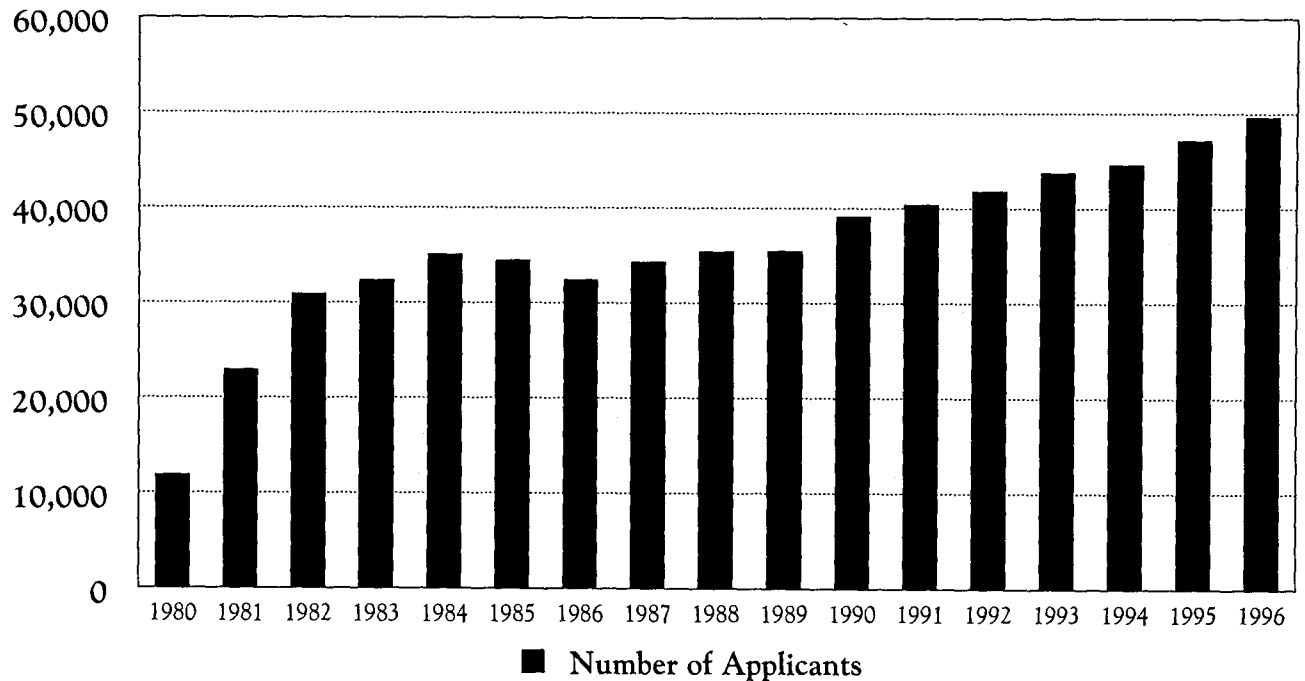
National Mean Scaled Score

	1977	1978	1979	1980	1981	1982	1983	1984	1985	1986
February	135.3	135.6	135.4	134.3	135.8	134.8	134.2	135.1	136.4	135.5
July	140.7	141.4	141.0	140.6	140.8	139.7	141.5	139.2	140.6	140.3
	1987	1988	1989	1990	1991	1992	1993	1994	1995	1996
February	136.4	137.2	137.8	135.9	137.5	139.0	138.7	139.3	138.6	138.8
July	140.3	139.8	142.0	141.4	141.1	142.9	142.8	145.2	143.7	143.2

Score



MPRE Statistics



	1980	1981	1982	1983	1984	1985	1986	1987	1988	1989
Number of Applicants	11,913	22,982	30,902	32,402	35,113	34,507	32,456	34,358	35,440	35,532
	1990	1991	1992	1993	1994	1995	1996			
Number of Applicants	39,192	40,448	41,884	43,782	44,664	47,213	49,680			

	March 1996	August 1996	November 1996	Total 1996
Number of Applicants	20,278	14,491	14,911	49,680
Mean Scaled Score	101.61	100.54	101.22	101.18
Maximum	150.00	150.00	150.00	150.00
Minimum	50.00	50.00	50.00	50.00

Scaled Scores	Approximate Percent Earning Scaled Scores At Or Below			
90	24	26	25	25
85	19	20	20	20
80	15	15	15	15
75	9	11	8	9
70	6	5	6	6
65	4	3	4	4
60	2	2	2	2