

Introduction

On the following pages are tables showing data on disbarred attorneys, the number of persons taking and passing bar examinations in 1994, the number taking from different sources of legal education (ABA-Approved law schools, etc.), the number of first-timers and repeaters, and the number of persons admitted by examination, on motion, as foreign legal consultants, and by diploma for the last five years. Data for the tables appearing on pages 8 through 17 were provided by the reporting jurisdictions. All percent passing figures used in these statistics are rounded to the nearest whole percent. In reviewing data on the number of applicants taking examinations, the reader should keep in mind that a person may seek admission in more than one jurisdiction in a given year. Some states have been unable to supply the actual number of those admitted to the bar in 1994 and instead have provided the number of those passing the bar or those recommended for admission.

Data for the Multistate Bar Examination and Multistate Professional Responsibility Examination statistics were provided by ACT.

Examinations Administered to Disbarred or Suspended Attorneys as a Condition For Reinstatement in 1994

JURISDICTION	TAKING	PASSING	% PASSING	COMMENTS
Arizona	3	2	67	
Arkansas	—	—	—	Optional.
California	—	—	—	The State Bar Court has only directed one attorney to re-take exam - this was many years ago. Most often, it is not done.
Colorado	1	1	100	
Florida	—	—	—	Disbarred Attorneys may seek readmission by filing a new application for the Bar Exam and the background investigation. Their numbers are included in general applicant population.
Georgia	—	—	—	
Guam	—	—	—	
Hawaii	—	—	—	
Iowa	1	1	100	
Kansas	—	—	—	
Kentucky	—	—	—	
Massachusetts	—	—	—	Examinations can be administered if there is a court order.
Michigan	3	2	67	
Minnesota	—	—	—	
Mississippi	1	—	—	
Nevada	—	—	—	
New Hampshire	—	—	—	
New Mexico	—	—	—	
North Carolina	1	1	100	A disciplined attorney is given the same examination as the other applicants.
North Dakota	—	—	—	Exam would be at discretion of court; specific information not available.
Oklahoma	—	—	—	
Oregon	—	—	—	
South Carolina	1	1	100	
South Dakota	—	—	—	
Texas	4	4	100	
Utah	1	1	100	
Virgin Islands	—	—	—	
TOTALS	16	13	81	

Persons Taking and Passing the 1994 Bar Examination

Jurisdiction	Number Taking February	Number Passing February	Percent Passing February	Number Taking July	Number Passing July	Percent Passing July	Total Taking	Total Passing	Total Percent Passing
Alabama	251	162	65	502	357	71	753	519	69
Alaska	86	61	71	92	67	73	178	128	72
Arizona	313	232	74	630	511	81	943	743	79
Arkansas	129	105	81	219	144	66	348	249	72
California	3,671	1,589	43	7,058	4,459	63	10,729	6,048	56
Attorney Exam	140	91	65	134	80	60	274	171	62
Colorado	319	230	72	714	569	80	1,033	799	77
Connecticut	462	360	78	1,020	873	86	1,482	1,233	83
Delaware	<i>No February Examination</i>			168	103	61	168	103	61
District of Columbia	114	50	44	140	76	54	254	126	50
Florida	1,075	869	81	2,052	1,744	85	3,127	2,613	84
Georgia ¹	1,141	921	81	787	534	68	1,928	1,455	75
Guam	26	24	92	21	18	86	47	42	89
Hawaii	123	84	68	215	153	71	338	237	70
Idaho	117	88	75	150	110	73	267	198	74
Illinois	791	723	91	2,311	2,184	95	3,102	2,907	94
Indiana	156	118	76	511	429	84	667	547	82
Iowa	73	61	84	249	205	82	322	266	83
	<i>(examination given in January and June in Iowa)</i>								
Kansas	235	194	83	342	267	78	577	461	80
Kentucky	198	154	78	394	313	79	592	467	79
Louisiana	330	196	59	728	487	67	1,058	683	65
Maine	108	85	79	162	119	73	270	204	76
Attorney Exam ²	74	61	82	45	28	62	119	89	75
Maryland	627	390	62	1,412	1,013	72	2,039	1,403	69
Attorney Exam	121	118	98	87	74	85	208	192	92
Massachusetts	819	524	64	2,372	1,958	83	3,191	2,482	78
Attorney Exam	103	92	89	83	76	92	186	168	90
Michigan	587	334	57	1,067	627	59	1,654	961	58
Minnesota	266	206	77	719	641	89	985	847	86
Mississippi	88	62	70	216	147	68	304	209	69
Attorney Exam	6	4	67	2	1	50	8	5	63
Missouri	308	264	86	736	662	90	1,044	926	89
Montana	<i>No February Examination</i>			130	115	88	130	115	88
Nebraska	52	43	83	213	199	93	265	242	91
Nevada	<i>No February Examination</i>			452	364	81	452	364	81
New Hampshire	116	84	72	174	142	82	290	226	78
New Jersey	1,291	748	58	4,293	3,415	80	5,584	4,163	75
New Mexico	119	95	80	247	194	79	366	289	79

¹Attorney exam takers are included in these figures (150 for February, 94 for July). Separate passing data on attorney exam takers is not available.

²Someone taking modified [special] exam may be a re-exam and not necessarily an attorney.

Persons Taking and Passing the 1994 Bar Examination

Jurisdiction	Number Taking February	Number Passing February	Percent Passing February	Number Taking July	Number Passing July	Percent Passing July	Total Taking	Total Passing	Total Percent Passing
New York	2,249	1,187	53	7,737	6,091	79	9,986	7,278	73
North Carolina ³	276	200	72	691	614	89	967	814	84
North Dakota	13	9	69	68	54	79	81	63	78
Northern Mariana Islands	6	4	67	6	4	67	12	8	67
Attorney Exam	1	—	—	—	—	—	1	—	—
Ohio	513	379	74	1,311	1,173	89	1,824	1,552	85
Oklahoma	194	168	87	356	294	83	550	462	84
Oregon	291	209	72	469	357	76	760	566	74
Pennsylvania	1,098	757	69	3,416	2,867	84	4,514	3,624	80
Puerto Rico	255	121	47	432	177	41	687	298	43
<i>(examination given in March and September in Puerto Rico)</i>									
Rhode Island	80	63	79	111	87	78	191	150	79
Attorney Exam	16	13	81	26	22	85	42	35	83
South Carolina	121	112	93	343	316	92	464	428	92
South Dakota	48	42	88	80	72	90	128	114	89
Tennessee	186	127	68	521	394	76	707	521	74
Texas	1,301	902	69	2,479	1,937	78	3,780	2,839	75
Attorney Exam ⁴	—	—	—	70	29	41	70	29	41
Utah	103	91	88	217	187	86	320	278	87
Attorney Exam	33	31	94	25	24	96	58	55	95
Vermont	57	40	70	108	83	77	165	123	75
Virgin Islands	22	10	45	33	16	48	55	26	47
Virginia	401	218	54	1,152	818	71	1,553	1,036	67
Washington State	537	399	74	881	657	75	1,418	1,056	74
West Virginia	67	43	64	212	174	82	279	217	78
Wisconsin	98	86	88	175	162	93	273	248	91
Wyoming	21	11	52	38	34	89	59	45	76
TOTAL	22,422	14,644	65	51,804	40,101	77	74,226	54,745	74

³Sealed applicants not included.

⁴Administered four times yearly, separate from regular exam.

Total Taking by Source of Legal Education in 1994

Jurisdiction	ABA- Approved Law School	Non-ABA- Approved Law School	Law School Outside the USA	Law Office Study	Jurisdiction	ABA- Approved Law School	Non-ABA- Approved Law School	Law School Outside the USA	Law Office Study
Alabama	466	287	2	—	Nevada	449	3	—	—
Alaska	178	—	—	—	New Hampshire	287	—	3	—
Arizona	929	10	4	—	New Jersey	5,584	—	—	—
Arkansas	348	—	—	—	New Mexico	366	—	—	—
California	6,230	3,334	—	15	New York	8,809	—	1,150	27
Colorado	1,018	5	10	—	North Carolina	958	7	2	—
Connecticut	1,482	—	—	—	North Dakota	81	—	—	—
Delaware	168	—	—	—	Northern Mariana Islands	12	—	—	—
District of Columbia	216	38	—	—	Ohio	1,812	—	12	—
Florida	3,123	4	—	—	Oklahoma	550	—	—	—
Georgia	1,507	420	1 ¹	—	Oregon	752	6	2 ²	—
Guam	46	1	—	—	Pennsylvania	4,514	—	—	—
Hawaii	332	4	2	—	Puerto Rico	682	1 ³	4	—
Idaho	267	—	—	—	Rhode Island	184	—	—	—
Illinois	3,102	—	—	—	South Carolina	464	—	—	—
Indiana	667	—	—	—	South Dakota	128	—	—	—
Iowa	322	—	—	—	Tennessee	704	—	3	—
Kansas	577	—	—	—	Texas	3,540	233	7	—
Kentucky	592	—	—	—	Utah	320	—	—	—
Louisiana	1,026	—	32	—	Vermont	151	—	1	13
Maine	270	—	—	—	Virgin Islands	55	—	—	—
Maryland	2,029	4	6	—	Virginia	1,491	—	28 ⁴	34
Massachusetts	2,771	420	—	—	Washington ⁵	Not Available	—	—	—
Michigan	1,654	—	—	—	West Virginia	276	3	—	—
Minnesota	985	—	—	—	Wisconsin	273	—	—	—
Mississippi	301	2	—	1	Wyoming	59	—	—	—
Missouri	1,043	1	—	—					
Montana	130	—	—	—	TOTAL	64,545	4,783	1,269	90
Nebraska	265	—	—	—					

¹ Applicant received a waiver.

² Applicant received a waiver.

³ Applicant received a waiver.

⁴ These applicants received a portion of their legal training in a foreign law school and also received a degree (other than a LL.B or J.D.) from an ABA-approved law school.

⁵ Law school information not available. All applicants must graduate from ABA-approved school or practice 3 out of 5 years.

First-Timers and Repeaters in 1994

<i>Jurisdiction</i>	<i>1994 Administration</i>	<i>Total Taking</i>	<i>First-Timers Taking</i>	<i>First-Timers Percent Passing</i>	<i>Repeaters Taking</i>	<i>Repeaters Percent Passing</i>
Alabama	February	251	159	70	92	55
	July	502	407	83	95	22
Alaska	February	86	52	83	34	53
	July	92	77	77	15	53
Arizona	February	313	215	80	98	60
	July	630	568	85	62	44
Arkansas	February	129	85	84	44	77
	July	219	202	68	17	41
California	February	3,671	1,291	61	2,380	34
	July	7,058	5,187	77	1,871	24
Colorado	February	319	204	82	115	55
	July	714	631	87	83	24
Connecticut	February	462	354	88	108	45
	July	1,020	935	90	85	41
Delaware	<i>No February Examination</i>					
	July	168	<i>Not Available</i>		<i>Not Available</i>	
District of Columbia	February	114	6	50	108	44
	July	140	48	81	92	40
Florida	February	1,075	831	89	244	52
	July	2,052	1,914	89	138	33
Georgia	February	1,141	914	92	227	33
	July	787	598	82	189	23
Guam	February	26	20	100	6	67
	July	21	20	90	1	—
Hawaii	February	123	70	84	53	47
	July	215	178	81	37	24
Idaho	February	117	82	77	35	71
	July	150	130	78	20	40
Illinois	February	791	650	94	141	78
	July	2,311	2,240	96	71	46
Indiana	February	156	<i>Not Available</i>		<i>Not Available</i>	
	July	511	476	87	35	49
Iowa	January	73	42	86	31	81
	June	249	233	82	16	81
Kansas	February	235	210	89	25	28
	July	342	315	80	27	56
Kentucky	February	198	99	78	99	78
	July	394	348	83	46	52
Louisiana	February	330	130	53	200	64
	July	728	614	70	114	48
Maine	February	108	75	85	33	64
	July	162	140	80	22	32
Maryland	February	627	373	77	254	41
	July	1,412	1,212	78	200	33

First-Timers and Repeaters in 1994

Jurisdiction	1994 Administration	Total Taking	First-Timers Taking	First-Timers Percent Passing	Repeaters Taking	Repeaters Percent Passing
Massachusetts	February	819	462	75	357	50
	July	2,372	2,122	88	250	36
Michigan	February	587	343	74	244	33
	July	1,067	870	69	197	12
Minnesota	February	266	187	85	79	59
	July	719	669	93	50	32
Mississippi	February	88	62	81	26	46
	July	216	188	72	28	39
Missouri	February	308	240	91	68	68
	July	736	699	95	37	46
Montana	No February Examination					
	July	130	119	92	11	55
Nebraska	February	52	36	86	16	75
	July	213	206	95	7	57
Nevada	No February Examination					
	July	452	389	85	63	56
New Hampshire	February	116	89	72	27	74
	July	174	160	84	14	50
New Jersey	February	1,291	671	69	620	46
	July	4,293	3,924	83	369	45
New Mexico	February	119	81	93	38	53
	July	247	234	82	13	23
New York	February	2,249	961	70	1,288	40
	July	7,737	6,730	86	1,007	33
North Carolina	February	276	168	77	108	65
	July	691	632	93	59	44
North Dakota	February	13	5	80	8	63
	July	68	64	84	4	—
Northern Mariana Islands	February	6	5	60	1	100
	July	6	6	67	—	—
Ohio	February	513	329	85	184	54
	July	1,311	1,211	94	100	38
Oklahoma	February	194	111	88	83	84
	July	356	328	87	28	25
Oregon	February	291	181	78	110	61
	July	469	420	80	49	47
Pennsylvania	February	1,098	728	83	370	42
	July	3,416	3,092	90	324	29
Puerto Rico	March	255	69	46	186	48
	September	432	314	53	118	8
Rhode Island	February	80	65	80	15	73
	July	111	104	80	7	57
South Carolina	February	121	103	93	18	89
	July	343	331	93	12	67

First-Timers and Repeaters in 1994

<i>Jurisdiction</i>	<i>1994 Administration</i>	<i>Total Taking</i>	<i>First-Timers Taking</i>	<i>First-Timers Percent Passing</i>	<i>Repeaters Taking</i>	<i>Repeaters Percent Passing</i>
South Dakota	February	48	39	92	9	67
	July	80	75	93	5	40
Tennessee	February	186	84	86	102	54
	July	521	472	82	49	18
Texas	February	1,301	866	75	435	58
	July	2,479	2,136	84	343	41
Utah	February	103	83	92	20	75
	July	217	207	87	10	60
Vermont	February	57	41	78	16	50
	July	108	88	84	20	45
Virgin Islands	February	22	15	60	7	14
	July	33	23	57	10	30
Virginia	February	401	236	64	165	40
	July	1,152	1,018	77	134	25
Washington	February	537	366	74	171	74
	July	881	658	75	223	74
West Virginia	February	67	9	67	58	64
	July	212	171	84	41	76
Wisconsin	February	98	75	93	23	70
	July	175	170	95	5	20
Wyoming	February	21	8	62	13	46
	July	38	22	77	16	75
TOTAL ¹		73,260	56,905		16,031	

¹The total for first-timers and the total for repeaters are short by 324, reflecting the 168 Delaware applicants and 156 Indiana February applicants for which those jurisdictions were unable to provide first-timer and repeater statistics.

Admission to Bar by States - 1990, 1991, 1992, 1993, and 1994

State	Admission by Examination					Admission on Motion				
	1990	1991	1992	1993	1994	1990	1991	1992	1993	1994
Alabama	359	393	454	492	542	—	—	—	—	—
Alaska	116	101	116	113	128	12	14	12	17	16
Arizona	506	650	603	Not Available	731	—	—	—	Not Available	—
Arkansas	228	265	273	248	249	—	—	—	—	—
California	5,824	5,669	6,234	5,804	6,048	—	—	—	—	—
Attorney Exam	288	224	210	142	171	—	—	—	—	—
Colorado	587	Not Available	Not Available	Not Available	797	404	Not Available	Not Available	Not Available	352
Connecticut	1,401	1,646	1,505	760	1,233	87	132	111	114	107
Delaware	103	100	106	Not Available	103	—	—	—	—	—
District of Columbia	169	180	155	135	122	2,953	3,526	2,929	2,935	2,383
Florida	2,447	2,593	2,680	2,583	2,681	—	—	—	—	—
Georgia	1,025	1,168	1,083	1,362	1,396	—	—	—	—	—
Guam	21	17	15	16	40	2	13	15	6	—
Hawaii	233	226	276	219	238	—	—	—	—	—
Idaho	179	163	205	174	204	—	—	—	—	—
Illinois	2,653	2,873	2,942	2,822	2,930	138	98	77	64	61
Indiana	533	540	550	671	611	75	48	56	45	53
Iowa	212	257	312	230	266	17	21	42	30	27
Kansas	397	450	484	450	461	5	3	4	3	—
Kentucky	339	370	348	386	467	40	42	15	30	30
Louisiana	595	716	751	731	683	—	—	—	—	—
Maine	142	106	122	100	116	—	—	—	—	—
Attorney Exam	123	100	96	98	89	—	—	—	—	—
Maryland	1,088	1,290	1,253	1,444	1,383	—	—	—	—	—
Attorney Exam	202	258	179	149	207	—	—	—	—	—
Massachusetts	1,924	2,023	2,378	1,890	2,206	—	—	—	—	—
Attorney Exam	140	129	137	127	144	—	—	—	—	—
Michigan	1,041	1,027	1,099	1,083	961	122	82	86	112	108
Minnesota	711	731	829	738	860	129	135	155	152	154
Mississippi	229	257	309	222	209	—	—	—	—	—
Attorney Exam	5	6	3	10	5	—	—	—	—	—
Missouri	836	868	850	915	1,026	177	114	91	87	100
Montana	89	74	105	97	162*	12	29	12	—	Not Available
Attorney Exam	—	6	1	1	—	—	—	—	—	—
Nebraska	169	202	203	224	242	61	63	77	76	71
Nevada	254	286	306	273	362	—	—	—	—	—
New Hampshire	223	214	233	221	219	—	—	—	—	—
New Jersey	2,877	3,081	3,450	3,392	3,831	—	—	—	2	2
New Mexico	272	295	307	295	289	—	—	—	—	—
New York	5,723	6,155*	6,320*	6,162	6,233	415	245	196	263	180
North Carolina	564	646	670	694	814	46	49	55	82	87
North Dakota	45	80	74	58	69	12	13	21	20	20
Northern Mariana Islands	13	7	6	11	8	17	16	19	20	19
Attorney Exam	9	—	3	2	—	—	—	—	—	—
Ohio	1,045	1,552	1,424	1,536	1,552	102	96	144	88	48
Oklahoma	456	429	467	439	461	19	13	16	31	14
Oregon	493	539	636	559	569	—	—	—	—	—

*Total includes some motion applicants.

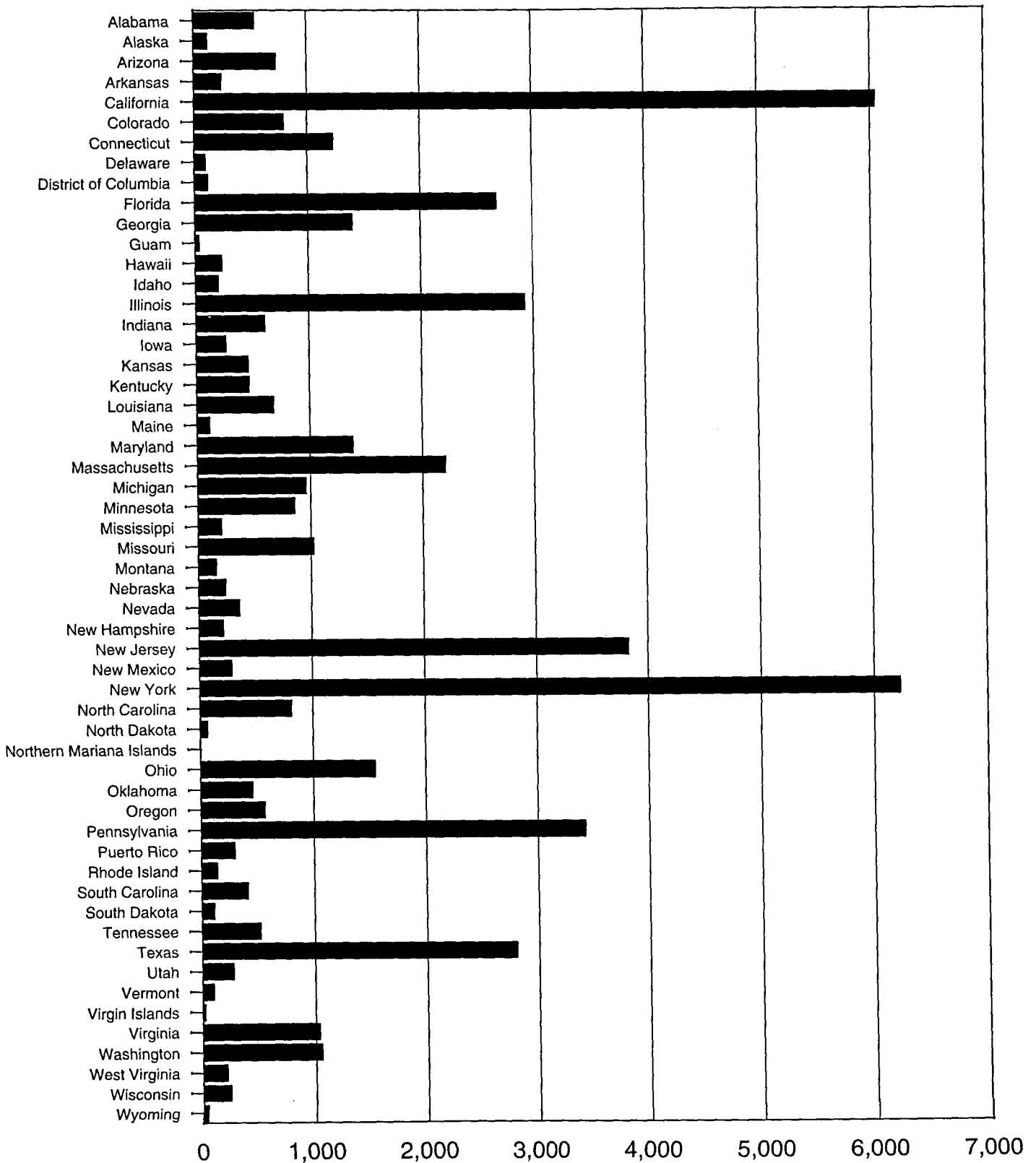
Admission to Bar by States - 1990, 1991, 1992, 1993, and 1994

State	Admission by Examination					Admission on Motion				
	1990	1991	1992	1993	1994	1990	1991	1992	1993	1994
Pennsylvania	3,637	2,333	2,793	—	3,434	1,030	550	600	—	45
Puerto Rico	249	341	283	415	298	—	—	—	—	—
Rhode Island	200	Not Available	170	188	144	24	Not Available	24	—	—
Attorney Exam	—	—	—	32	34	—	1	—	6	9
South Carolina	294	372	397	416	411	—	—	—	—	—
South Dakota	55	71	98	94	114	—	—	—	—	—
Tennessee	434	482	523	609	521	63	71	84	62	85
Texas	2,711	2,637	2,718	2,789	2,806	172	225	369	360	240
Attorney Exam	81	79	36	40	21	—	—	—	—	—
Utah	213	230	255	291	278	—	—	—	—	—
Attorney Exam	—	—	32	38	55	—	—	—	—	—
Vermont	93	77	119	84	103	35	25	30	32	24
Virgin Islands	—	—	—	—	26	—	—	—	—	—
Virginia	992	1,098	1,155	1,262	1,035	164	106	168	—	—
Washington	1,035	1,026	1,269	1,085	1,056	—	—	—	—	—
West Virginia	165	202	207	193	215	29	37	26	44	37
Wisconsin	190	207	267	264	248	87	89	95	72	63
Wyoming	45	81	55	60	45	20	34	36	35	24
TOTAL	47,282	48,198	51,139	45,938	53,059	6,469	5,890	5,565	4,788	4,359

State	Admission of Foreign Legal Consultants					Admission by Diploma				
	1990	1991	1992	1993	1994	1990	1991	1992	1993	1994
Alaska	—	—	—	1	—	—	—	—	—	—
California	—	—	—	—	4	—	—	—	—	—
District of Columbia	3	2	2	5	3	—	—	—	—	—
Florida	—	—	—	6	—	—	—	—	—	—
Hawaii	—	—	1	—	—	—	—	—	—	—
Illinois	—	—	—	—	1	—	—	—	—	—
Indiana	—	—	—	—	1	—	—	—	—	—
Michigan	—	1	—	1	1	—	—	—	—	—
Minnesota	—	—	—	—	1	—	—	—	—	—
New Jersey	—	1	—	—	—	—	—	—	—	—
New York	—	—	—	13	10	—	—	—	—	—
Ohio	—	2	—	2	—	—	—	—	—	—
Texas	—	1	1	1	2	—	—	—	—	—
Washington	—	—	—	2	—	—	—	—	—	—
Wisconsin	—	—	—	—	—	416	489	413	426	457
TOTAL	3	7	4	31	23	416	489	413	426	457

ADMISSION BY EXAMINATION BY STATE - 1994

■ Number Admitted

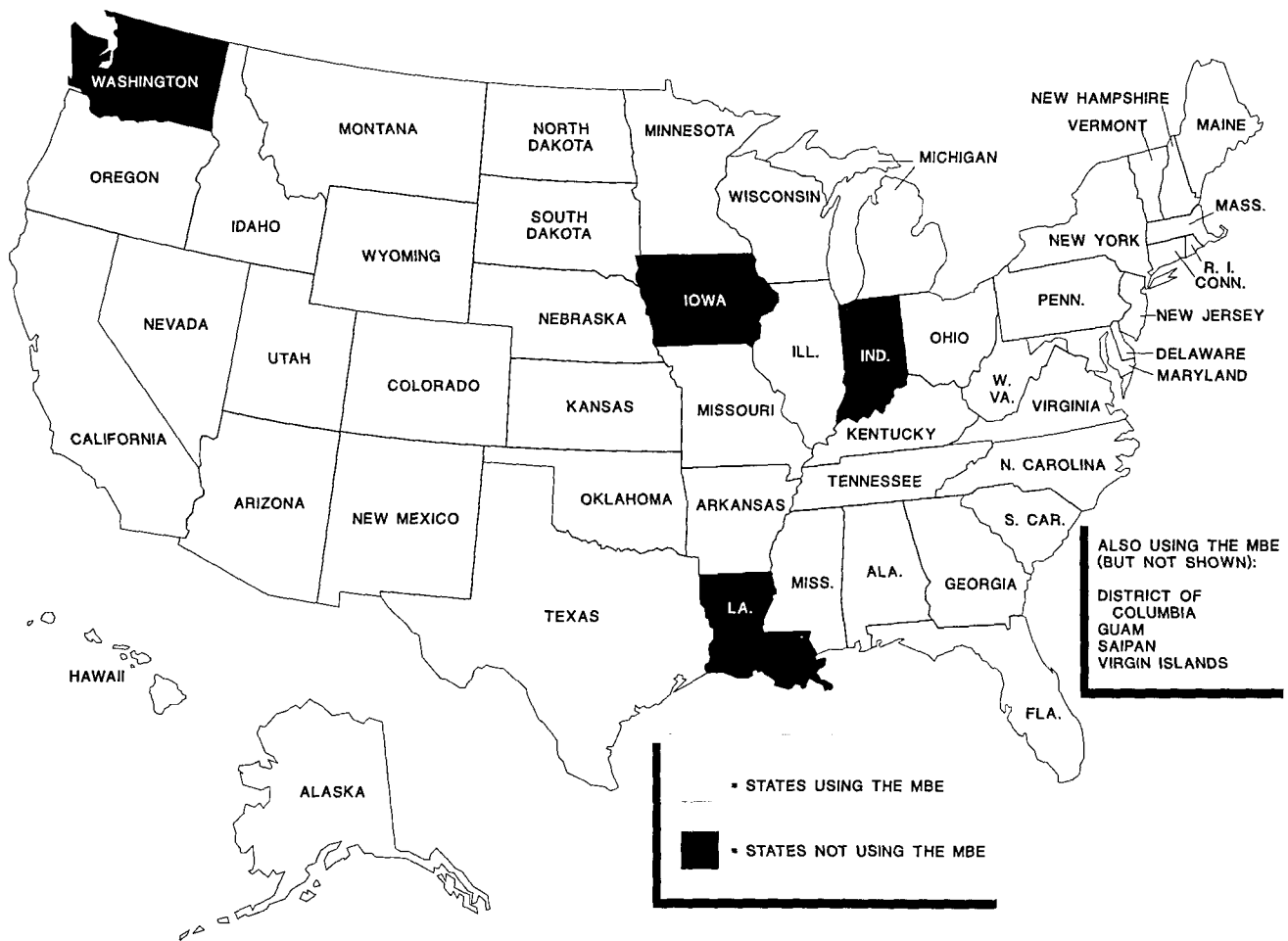


MULTISTATE BAR EXAMINATION STATISTICS

The National Conference of Bar Examiners has administered the Multistate Bar Examination (MBE) since 1972. The MBE is currently used in 50 jurisdictions.

The MBE is a 200-item multiple-choice examination covering Constitutional Law, Contracts, Criminal Law, Evidence, Real Property, and Torts. Both raw and scaled scores are computed for each applicant. Raw scores on different forms of the test are not comparable due to differences in the difficulty of test forms. Scaled scores are produced by a statistical procedure called equating that involves repeating items from previous examinations. A comparison of the performance of the current applicant population on the repeated items to performance of the prior applicant group allows conclusions to be drawn about the relative difficulty of the new items on the exam, and test scores are adjusted accordingly. Scaled scores are comparable across administrations of the examination.

Jurisdictions Using the Multistate Bar Examination



MBE Summary Statistics

February 1994—18,267 Applicants

	Constitutional		Criminal		Real		Total Raw	Total Scaled
	Law	Contracts	Law	Evidence	Property	Torts		
Mean	20.392	23.216	19.03	16.764	14.811	25.66	119.874	139.335
Standard Deviation	3.684	4.488	3.253	3.547	3.714	4.11	17.35	15.423
Maximum	30.0	38.0	29.0	28.0	27.0	40.0	187.0	199.0
Minimum	4.0	6.0	5.0	3.0	1.0	8.0	51.0	78.0
Median	21.077	23.839	19.639	17.29	15.317	26.295	120.518	139.765

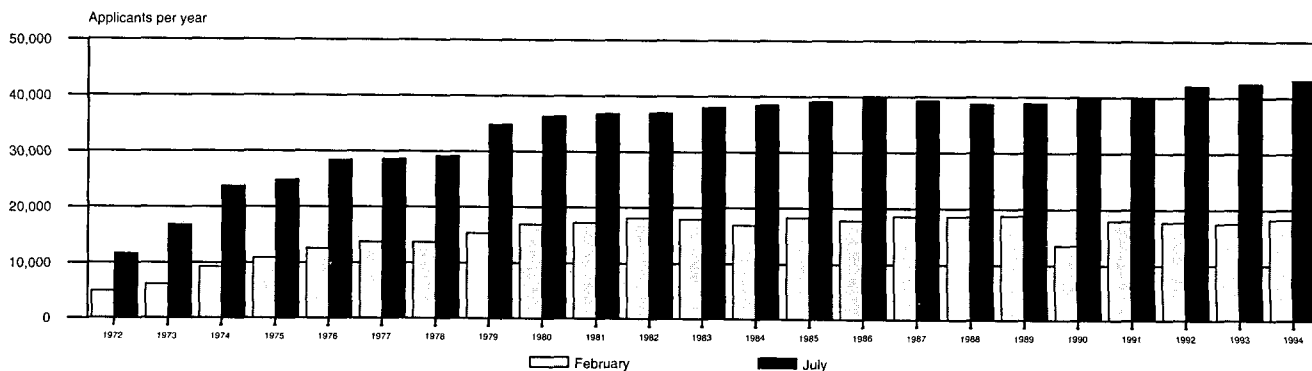
July 1994—43,127 Applicants

	Constitutional		Criminal		Real		Total Raw	Total Scaled
	Law	Contracts	Law	Evidence	Property	Torts		
Mean	21.351	27.443	18.118	19.268	18.501	25.972	130.653	145.172
Standard Deviation	3.835	4.223	3.101	3.531	4.065	4.821	18.424	15.68
Maximum	30.0	40.0	29.0	30.0	30.0	40.0	185.0	191.0
Minimum	3.0	6.0	5.0	3.0	2.0	6.0	42.0	70.0
Median	22.18	28.182	18.726	19.953	19.234	26.793	132.473	146.473

Number of Applicants Taking the MBE

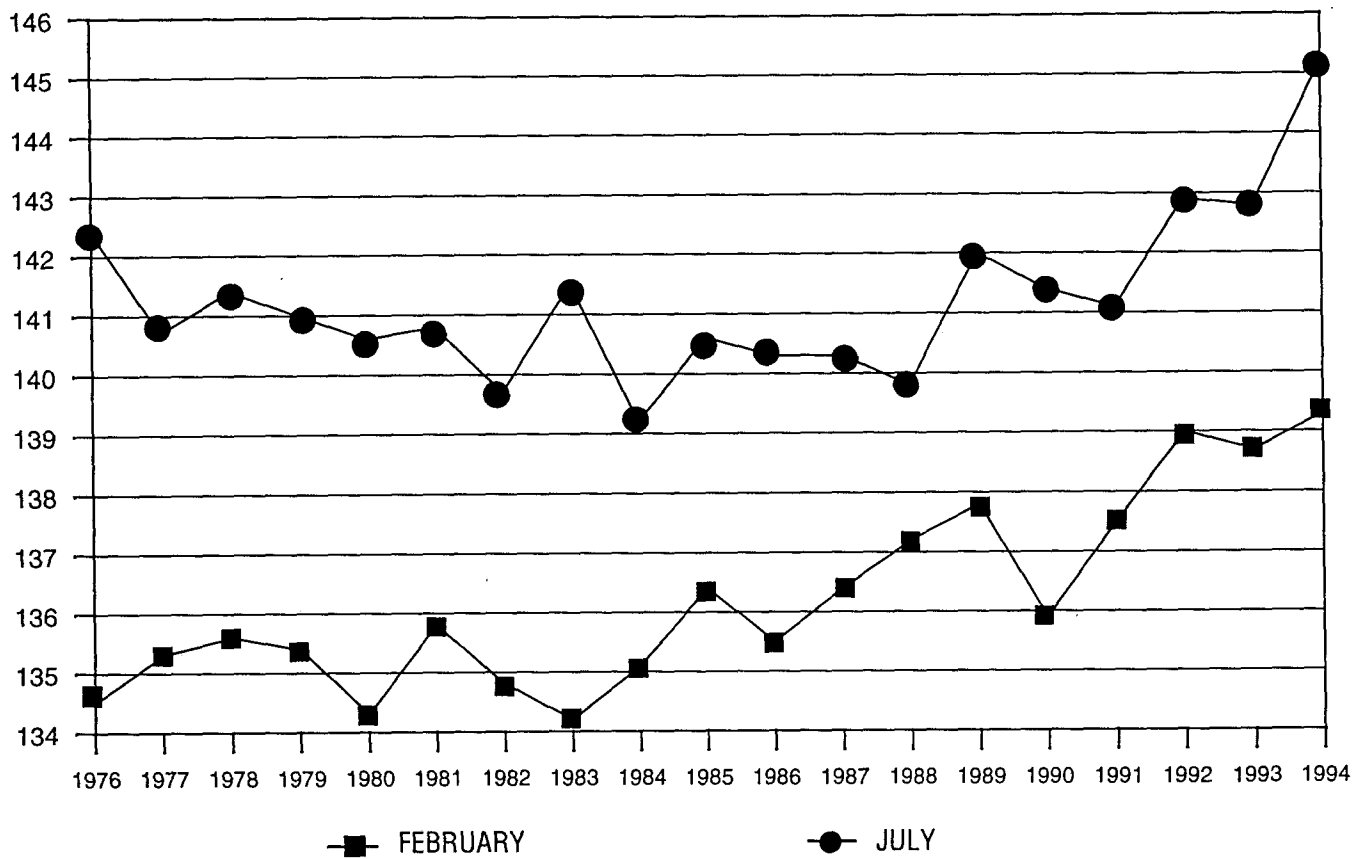
	February Applicants	July Applicants	Total Number Applicants		February Applicants	July Applicants	Total Number Applicants
1972	4,955	11,672	16,627	1985	18,303	39,149	57,452
1973	6,182	16,826	23,008	1986	17,825	39,774	57,599
1974	9,316	23,728	33,044	1987	18,606	39,335	57,941
1975	10,963	24,835	35,798	1988	18,610	38,765	*57,375
1976	12,610	28,381	40,991	1989	18,821	38,900	57,721
1977	13,738	28,608	42,346	1990	13,545**	39,750	53,295
1978	13,715	29,171	42,886	1991	17,954	39,621	57,575
1979	15,341	34,818	50,159	1992	17,755	42,064	59,819
1980	16,948	36,368	53,316	1993	17,497	42,505	60,002
1981	17,289	36,846	54,135	1994	18,267	43,127	61,394
1982	18,150	36,995	55,145				
1983	17,964	38,034	55,998				
1984	16,938	38,511	55,449				

*519 NY applicants not included
**Excluding 3,837 CA applicants



National Mean Scaled Score

	1976	1977	1978	1979	1980	1981	1982	1983	1984	1985
February	134.5	135.3	135.6	135.4	134.3	135.8	134.8	134.2	135.1	136.4
July	142.4	140.7	141.4	141.0	140.6	140.8	139.7	141.5	139.2	140.6
	1986	1987	1988	1989	1990	1991	1992	1993	1994	
February	135.5	136.4	137.2	137.8	135.9	137.5	139.0	138.7	139.3	
July	140.3	140.3	139.8	142.0	141.4	141.1	142.9	142.8	145.2	

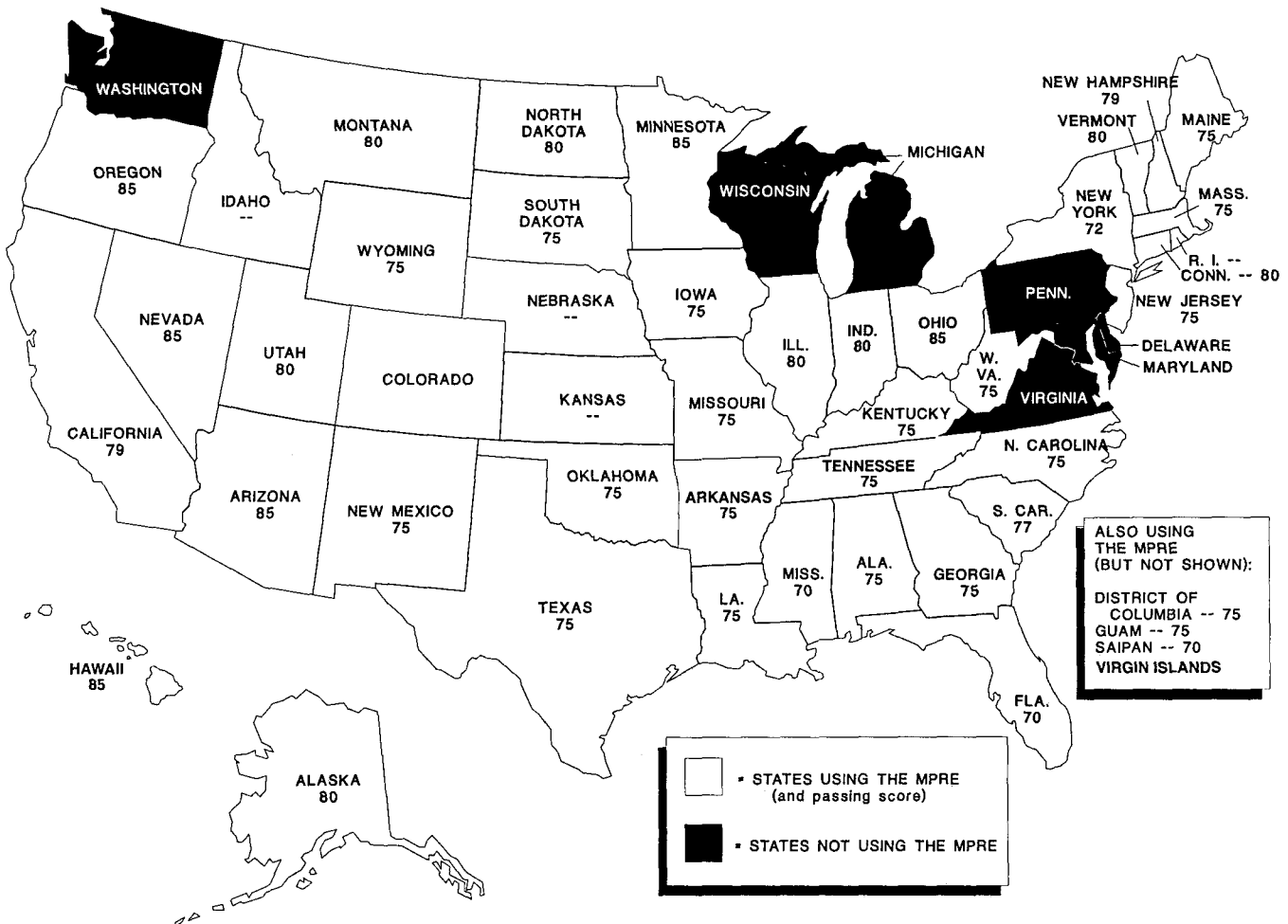


MULTISTATE PROFESSIONAL RESPONSIBILITY EXAMINATION STATISTICS

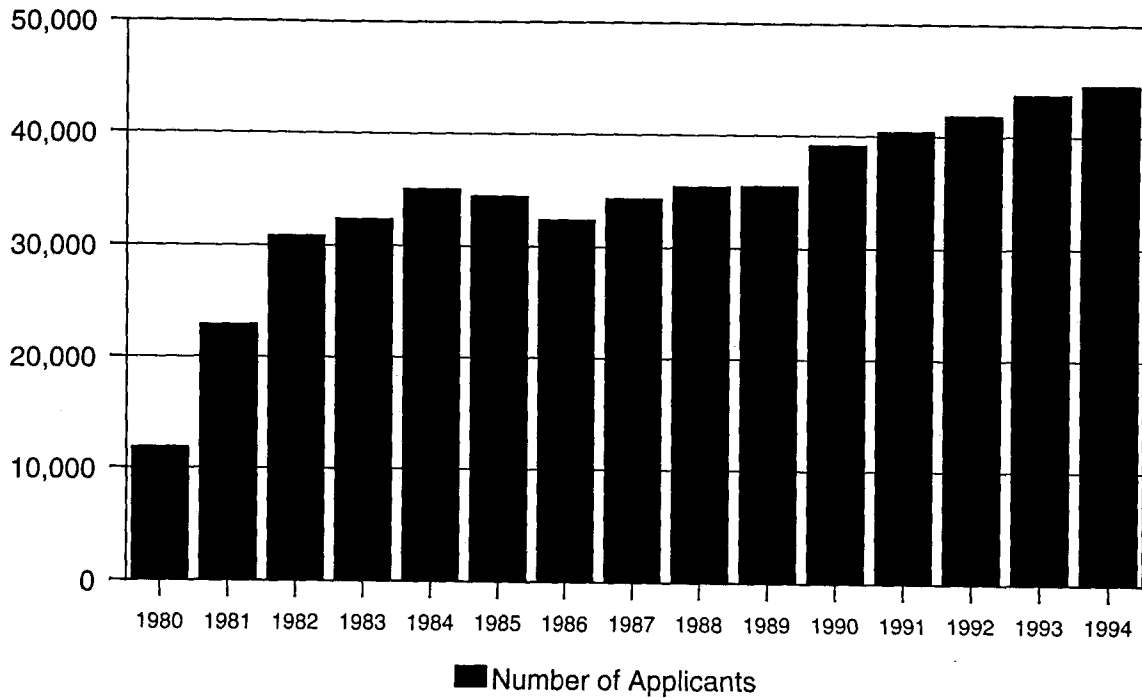
The National Conference of Bar Examiners has administered the Multistate Professional Responsibility Examination (MPRE) since 1980. Forty-seven jurisdictions are now participating jurisdictions.

The MPRE consists of fifty multiple-choice questions. Both raw and scaled scores are computed for each applicant. Raw scores on different forms of the test are not comparable due to differences in the difficulty of test forms. Scaled scores are produced by a statistical procedure called equating that involves repeating items from previous examinations. A comparison of the performance of the current applicant population on the repeated items to performance of the prior applicant group allows conclusions to be drawn about the relative difficulty of the new items on the exam, and test scores are adjusted accordingly. Scaled scores are produced on a range of 50 to 150 and are comparable across administrations of the examination.

Jurisdictions Using the MPRE



MPRE Statistics



	1980	1981	1982	1983	1984	1985	1986	1987	1988	1989	1990	1991	1992	1993	1994
Number of Applicants	11,913	22,982	30,902	32,402	35,113	34,507	32,456	34,358	35,440	35,532	39,192	40,448	41,884	43,782	44,664*

	March 1994	August 1994	November 1994	Total 1994
Number of Applicants	17,530	13,571	13,563	44,664*
Mean Scaled Score	101.82	100.11	101.26	101.13
Maximum	150.00	148.00	148.00	150.00
Minimum	50.00	50.00	50.00	50.00

Scaled Scores	Approx. Percent Earning Scaled Scores At Or Below			
90	26	28	27	27
85	19	21	19	20
80	14	16	14	15
75	9	11	10	10
70	7	8	6	7
65	4	5	4	4
60	2	3	3	3

*Excludes 61 examinees who were retested in August 1994.